

DEPARTMENT OF THE ARMY TECHNICAL MANUAL

ORGANIZATIONAL MAINTENANCE REPAIR PARTS AND SPECIAL TOOLS LISTS FOR TERMINAL, TELEGRAPH AN/FCC-19 AND TERMINAL, TELEGRAPH AN/FCC-25 (NSN 5805-00-086-6135)

Headquarters, Department of the Army, Washington DC 19 November 1976

Current as of 24 May 1976

REPORTING OF ERRORS

You can improve this manual by recommending improvements using DA Form 2028-2 (Test) located in the back of the manual. Simply tear out the self addressed form, fill it out as shown on the sample, fold it where shown, and drop it in the mail.

If there are no blank DA Form 2028-2 (Test) in the back of your manual, use the standard DA Form 2028 (Recommended Changes to Publications and Blank Forms) and forward to the Commander, US Army Electronics Command, ATTN: DRSEL-MA-Q, Fort Monmouth, New Jersey 07703.

In either case a reply will be furnished direct to you.

Table of Contents

Table with 4 columns: Section, Group, Description, Page, and Illus Figure. It lists sections I, II, III, and IV, including sub-sections like Introduction, Repair parts list, and various terminal/telegraph components.

\* This manual supersedes TM 11-5805-337-20P, 19 January 1965.

## SECTION I INTRODUCTION

### 1. Scope

This manual lists repair parts required for performance of organizational maintenance of the AN/FCC-19 and the AN/FCC-25.

### 2. General

This Repair Parts and Special Tools List is divided into the following sections:

a. *Section II Repair Parts List.* A list of repair parts authorized for use in the performance of maintenance. The list also includes parts which must be removed for replacement of the authorized parts. Parts lists are composed of functional groups in ascending numerical sequence, with the parts in each group listed in figure and item number sequence.

b. *Section III. Special Tools List.* Not applicable.

c. *Section IV Federal Stock Number and Part Number Index.* A list, in ascending numerical sequence, of all Federal stock numbers appearing in the listings, followed by a list, in alphanumeric sequence, of all part numbers appearing in the listings. Federal stock number and parts numbers are cross-referenced to each illustration figure and item number appearance.

### 3. Explanation of Columns

The following provides an explanation of columns found in the tabular listings:

a. *Illustration.* This column is divided as follows:

(1) *Figure number.* Indicates the figure number of the illustration in which the item is shown.

(2) *Item number.* The number used to identify each item called out in the illustration.

b. *Source, Maintenance, and Recoverability Codes (SMR).*

(1) *Source code.* Source codes are assigned to support items to indicate the manner of acquiring support items for maintenance, repair, or overhaul of end items. Source codes are entered in the first and second positions of the Uniform SMR Code format as follows:

Code	Definition
PA--	Item procured and stocked for anticipated or known usage.

(2) *Maintenance code.* Maintenance codes are assigned to indicate the levels of maintenance authorized to USE and REPAIR support items. The maintenance codes are entered in the third and fourth positions of the Uniform SMR Code format as follows:

(a) The maintenance code entered in the third position will indicate the lowest maintenance level authorized to remove, replace, and use the support item. The maintenance code entered in the third position will indicate the following level of maintenance:

Code	Application/Explanation
O	-Support item is removed, replaced, used at the organizational level.

(b) The maintenance code entered in the fourth position indicates whether the item is to be repaired and identifies the lowest maintenance level with the capability to perform complete repair (i.e., all authorized maintenance functions). This position will contain the following maintenance code:

Code	Application/Explanation
Z	-Nonreparable. No repair is authorized.

(3) *Recoverability code.* Recoverability codes are assigned to support items to indicate the disposition action on unserviceable items. The recoverability code is entered in the fifth position of the Uniform SMR Code format as follows:

Recoverability Codes	Definition
Z	-Nonreparable item. When unserviceable, condemn and dispose at the level indicated in position 3.

c. *Federal Stock Number.* Indicates the Federal stock number assigned to the item.

#### NOTE

For requisitioning purposes, the Federal stock number must be converted to the National stock number by adding "-00-" after the Federal stock classification (FSC) code (first four digits). For example, FSN 6625-553-0142 converts to NSN 6625-00-553-0142.

d. *Part Number.* Indicates the primary number used by the manufacturer (individual, company, firm, corporation, or Government activity), which controls the design and characteristics of the item by means of its engineering drawings, specifications standards, and inspection requirements, to identify an item or range of items.

#### NOTE

When a stock-numbered item is requisitioned, the repair part received may have a different part number than the part being replaced.

e. *Federal Supply Code for Manufacturer (FSCM).* The FSCM is a 5-digit numeric code listed in SB 708-42 which is used to identify the manufacturer, distributor, or Government agency, etc.

f. *Description.* Indicates the Federal item name and, if required, a minimum description to identify the item.

g. *Unit of Measure (U/M).* Indicates the standard of the basic quantity of the listed item as used in

performing the actual maintenance function. This measure is expressed by a two-character alphabetical abbreviation (e.g., ea, in, pr, etc.). When the unit of measure differs from the unit of issue, the lowest unit of issue that will satisfy the required units of measure will be requisitioned.

*h. Quantity Incorporated in Unit.* Indicates the quantity of the item used in the breakout shown on the illustration figure, which is prepared for a functional group, subfunctional group, or an assembly.

#### 4. Special Information

*a.* Beneath the description data, effectivity and configuration differences within and between the AN/FCC-19 and AN/FCC-25 are indicated. Figures 2 and 3 reflect usable on data.

*b.* The following publication pertains to the AN/FCC-19 and the AN/FCC-25 and their components. TM 11-5805-337-12 Operator's and Organizational Maintenance Manual: Terminals, Telegraph AN/FCC-19 and AN/FCC-25.

#### 5. How to Locate Repair Parts

*a.* When Federal stock number or part number is unknown:

(1) *First.* Using the table of contents, determine the functional group or functional subgroup within which the repair part belongs. This is necessary since illustrations are prepared for functional groups or functional subgroups, and listings are divided into the same groups.

(2) *Second.* Find the illustration covering the functional group or functional subgroup to which the repair part belongs.

(3) *Third.* Identify the repair part on the illustration and note the illustration figure and item number of the repair part.

(4) *Fourth.* Using the Repair Parts Listing, find the figure and item number noted on the illustration.

*b.* When Federal stock number or part number is known:

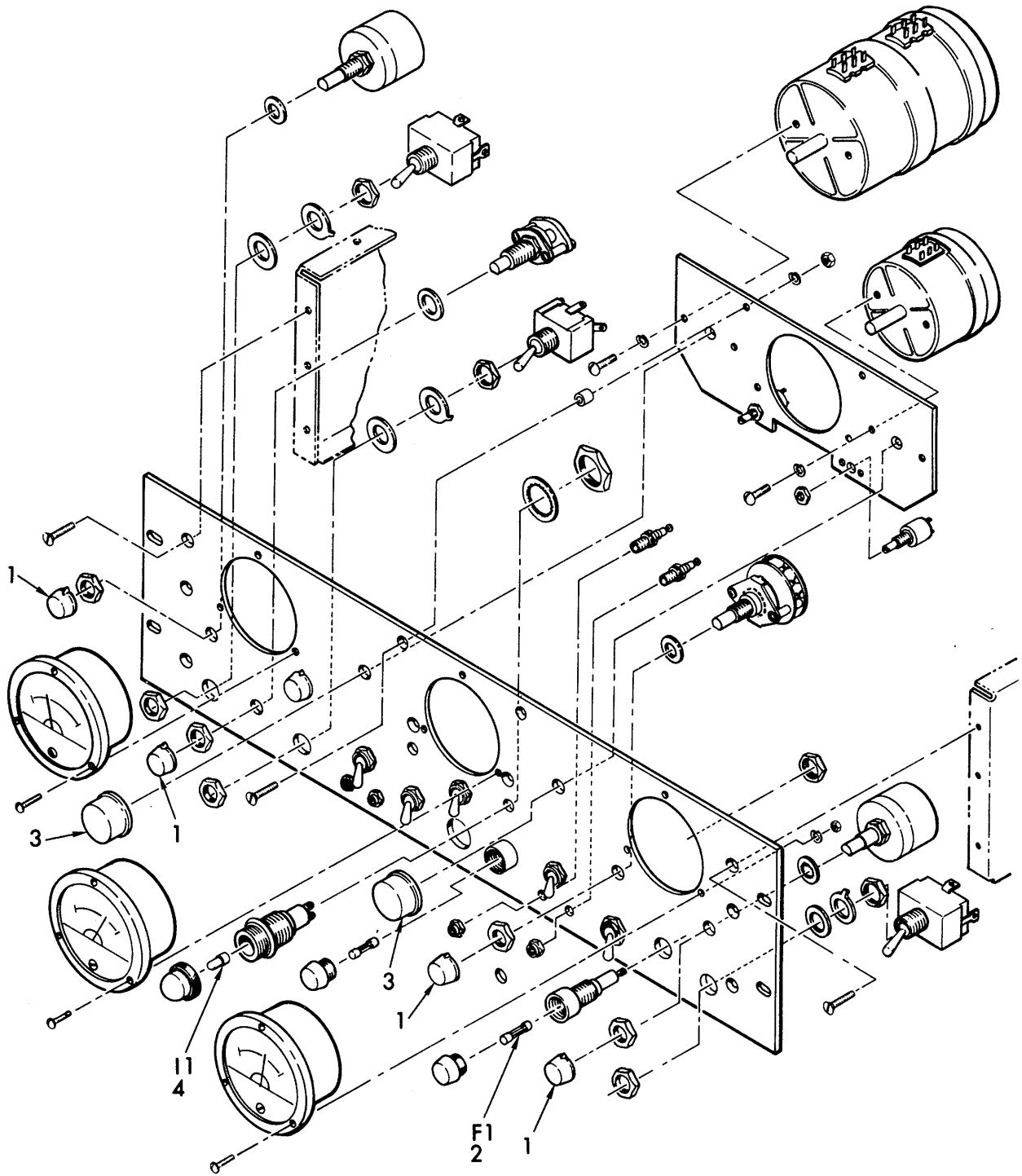
(1) *First.* Using the Index of Federal Stock Numbers and Part Numbers, find the pertinent Federal stock number or part number. This index is in ascending FSN sequence, followed by a list of part numbers in ascending alphanumeric sequence, cross-referenced to the illustration figure number and item number.

(2) *Second.* After finding the figure and item number, locate the figure and item number in the repair parts list.

#### 6. Abbreviations

Not applicable)

**(Next printed page is 4)**



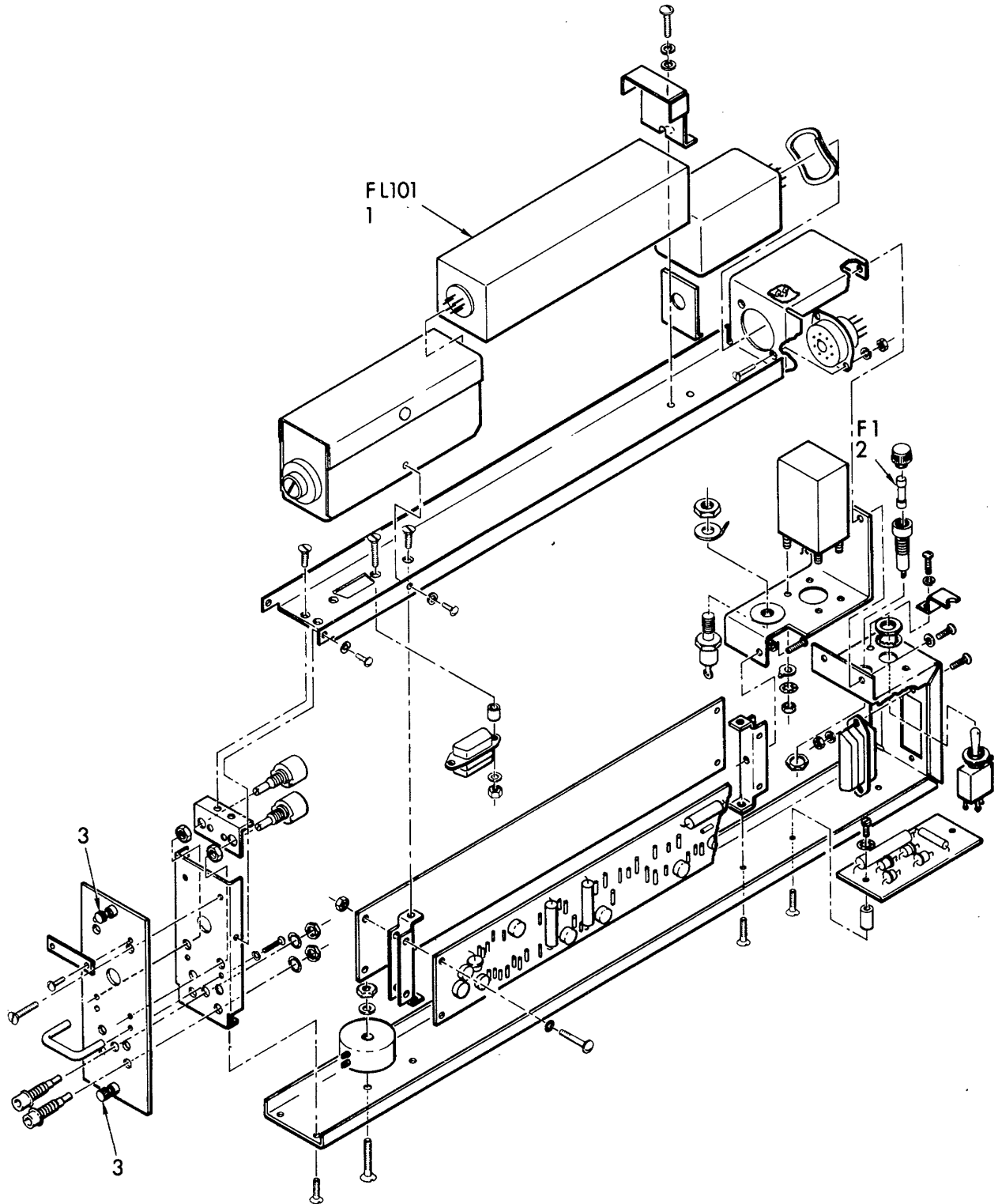
**PREFIX ALL REFERENCE  
DESIGNATIONS WITH A37**

**ELIAU 001**

Figure 1. Test Set, Telegraph Group, SMD489889

SECTION II. REPAIR PARTS LIST

(1) ILLUSTRATION		(2)	(3)	(4)	(5)	(6)	(7)	(8)
(a) FIG. NO.	(b) ITEM NO.	SMR CODE	FEDERAL STOCK NUMBER	PART NUMBER	FSCM	DESCRIPTION USABLE ON CODE	U/M	QTY INC IN UNIT
						<b>GROUP: 00 TERMINALS, TELEGRAPH AN/FCC-19, AN/FCC-25 GROUP: 02 TEST SET, TELEGRAPH GROUP</b>		
1	1	PAOZZ	5355-083-0829	MS91528-2N3B	96906	KNOB	EA	5
1	2	PAOZZ		F02A250V-4A	81349	FUSE, CARTRIDGE	EA	1
1	3	PAOZZ		MS91528-2N4B	81349	KNOB	EA	2
1	4	PAOZZ		NE51	81349	LAMP, GLOW	EA	1



**PREFIX ALL REFERENCE  
DESIGNATIONS WITH A3-18**

**ELIAU 002**

Figure 2. Converter, Frequency Shift, SMD454053

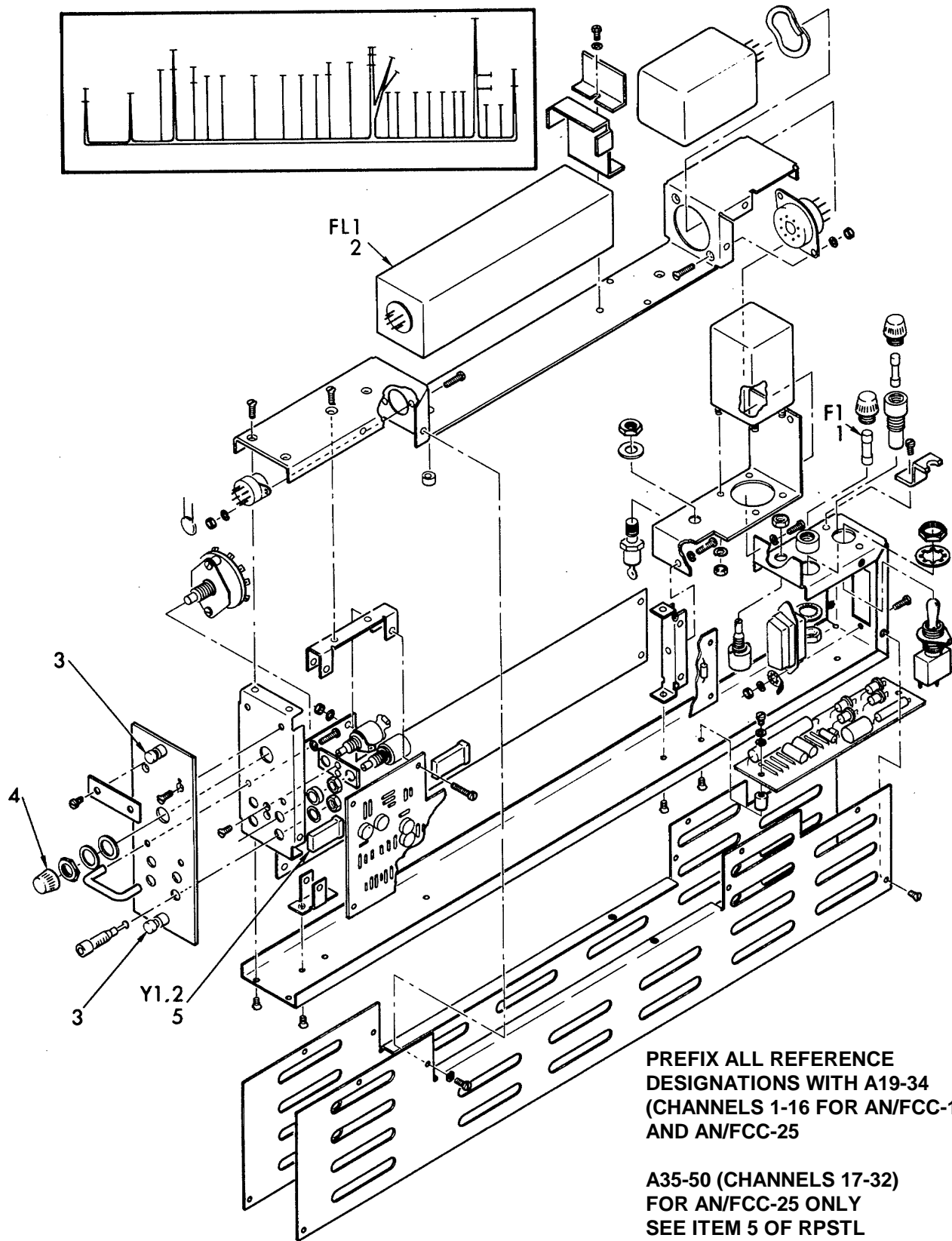
SECTION II. REPAIR PARTS LIST

(1) ILLUSTRATION		(2)	(3)	(4)	(5)	(6)	(7)	(8)
(a) FIG. NO.	(b) ITEM NO.	SMR CODE	FEDERAL STOCK NUMBER	PART NUMBER	FSCM	DESCRIPTION USABLE ON CODE	U/M	QTY INC IN UNIT
						<b>GROUP: 04 CORTERTER, FREQUENCY SHIFT</b>		
2	1	PAOZZ	5915-483-5669	9-1651-01	88183	FILTER, BANDPASS CHANNEL 1 ONLY	EA	1
2	1	PAOZZ	5915-483-5670	9-1651-02	88183	FILTER, BANDPASS CHANNEL 2 ONLY	EA	1
2	1	PAOZZ	5915--483-5671	9-1651-03	88183	FILTER, BANDPASS CHANNEL 3 ONLY	EA	1
2	1	PAOZZ	5915-013-7011	9-1651-04	88183	FILTER, BANDPASS CHANNEL 4 ONLY	EA	1
2	1	PAOZZ	5915-179-2849	9-1651-05	88183	FILTER, BANDPASS CHANNEL 5 ONLY	EA	1
2	1	PAOZZ	5915-239-3206	9-1651-06	88183	FILTER, BANDPASS CHANNEL 6 ONLY	EA	1
2	1	PAOZZ	5915-239-3207	9-1651-07	88183	FILTER, BANDPASS CHANNEL 7 ONLY	EA	1
2	1	PAOZZ	5915-240-2822	9-1651-08	88183	FILTER, BANDPASS CHANNEL 8 ONLY	EA	1
2	1	PAOZZ	5915-239-3199	9-1651-09	88183	FILTER, BANDPASS CHANNEL 9 ONLY	EA	1
2	1	PAOZZ	5915-239-3200	9-1651-10	88183	FILTER, BANDPASS CHANNEL 10 ONLY	EA	1
2	1	PAOZZ	5915-239-3201	9-1651-11	88183	FILTER, BANDPASS CHANNEL 11 ONLY	EA	1
2	1	PAOZZ	5915-230-3202	9-1651-12	88183	FILTER, BANDPASS CHANNEL 12 ONLY	EA	1
2	1	PAOZZ	5915-177-2639	9-1651-13	88183	FILTER, BANDPASS CHANNEL 13 ONLY	EA	1
2	1	PAOZZ	PAOZZ	9-1651-14	88183	FILTER, BANDPASS CHANNEL 14 ONLY	EA	1

SECTION II. REPAIR PARTS LIST

(1) ILLUSTRATION		(2)	(3)	(4)	(5)	(6)	(7)	(8)
(a) FIG. NO.	(b) ITEM NO.	SMR CODE	FEDERAL STOCK NUMBER	PART NUMBER	FSCM	DESCRIPTION USABLE ON CODE	U/M	QTY INC IN UNIT
2	1	PAOZZ		9-1651-15	88183	FILTER, BANDPASS CHANNEL 15 ONLY	EA	1
2	1	PAOZZ		9-1651-16	88183	FILTER, BANDPASS CHANNEL 16 ONLY	EA	1
2	2	PAOZZ	5920-280-8342	F02A250V1 A	81349	FUSE, CARTRIDGE	EA	1
2	3	PAOZZ		7155-6-32	05791	SCREW, CAPTIVE	EA	2





ELIAU 003

Figure 3. Keyer, Frequency Shift, SMD454016

## SECTION II. REPAIR PARTS LIST

(1) ILLUSTRATION		(2)	(3)	(4)	(5)	(6)	(7)	(8)
(a) FIG. NO.	(b) ITEM NO.	SMR CODE	FEDERAL STOCK NUMBER	PART NUMBER	FSCM	DESCRIPTION USABLE ON CODE	U/M	QTY INC IN UNIT
						<b>GROUP: 05 KEYER, FREQUENCY SHIFT</b>		
3	1	PAOZZ	5920-296-0451	F02A250V1-8A	81349	FUSE, CARTRIDGE	EA	1
3	2	PAOZZ	5915-069-3664	SMC563335-1	80063	FILTER, BANDPASS CHANNEL 1 ONLY	EA	1
3	2	PAOZZ	5915-069-5014	SMC563335-2	80063	FILTER, BANDPASS CHANNEL 2	EA	1
3	2	PAOZZ	5915-069-5913	SMC563335-3	80063	FILTER, BANDPASS CHANNEL 3 ONLY	EA	1
3	2	PAOZZ	5915-069-2727	SMC563335-4	80063	FILTER, BAN DPASS CHANNEL 4 ONLY	EA	1
3	2	PAOZZ	5915-069-2726	SMC563335-5	80063	FILTER, BANDPASS CHANNEL 5 ONLY	EA	1
3	2	PAOZZ	5915-069-2725	SMC563335-6	80063	FILTER, BAN DPASS CHANNEL 6 ONLY	EA	1
3	2	PAOZZ	5915-240-2819	SMC563335-7	80063	FILTER, BANDPASS CHANNEL 7 ONLY	EA	1
3	2	PAOZZ	5915-069-2711	SMC563335-8	80063	FILTER, BANDPASS CHANNEL 8 ONLY	EA	1
3	2	PAOZZ	5915-069-2712	SMC563335-9	80063	FILTER, BANDPASS CHANNEL 9 ONLY	EA	1
3	2	PAOZZ	5915-069-2708	SMC563335-10	80063	FILTER, BANDPASS CHANNEL 10 ONLY	EA	1
3	2	PAOZZ	5915-069-3663	SMC563335-11	80063	FILTER, BANDPASS CHANNEL 11 ONLY	EA	1
3	2	PAOZZ	5915-069-2724	SMC563335-12	80063	FILTER, BAN DPASS CHANNEL 12 ONLY	EA	1

SECTION II. REPAIR PARTS LIST

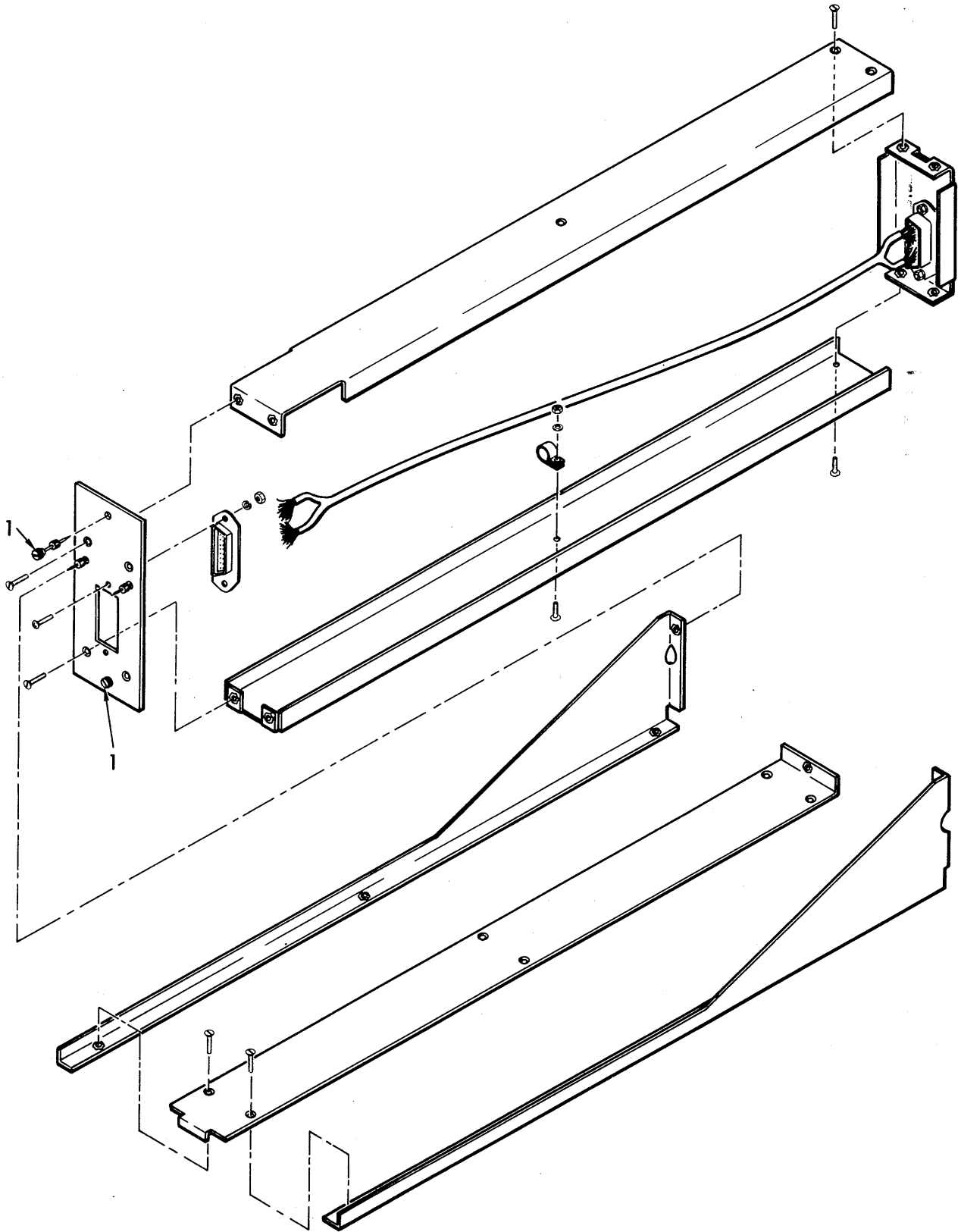
(1) ILLUSTRATION		(2)	(3)	(4)	(5)	(6)	(7)	(8)
(a) FIG. NO.	(b) ITEM NO.	SMR CODE	FEDERAL STOCK NUMBER	PART NUMBER	FSCM	DESCRIPTION USABLE ON CODE	U/M	QTY INC IN UNIT
3	2	PAOZZ	5915-930-4183	SMC563335-13	80063	FILTER, BAN DPASS CHANNEL 13 ONLY	EA	1
3	2	PAOZZ	5915-930-4184	SMC563335-14	80063	FILTER, BANDPASS CHANNEL 14 ONLY	EA	1
3	2	PAOZZ	5915-930-4185	SMC563335-15	80063	FILTER, BANDPASS CHANNEL 15 ONLY	EA	1
3	2	PAOZZ	5915-069-2729	SMC563335-16	80063	FILTER, BANDPASS CHANNEL 16 ONLY	EA	1
3	3	PAOZZ	5355-083-0829	7155-6-32	05791	SCREW, CAPTIVE	EA	2
3	4	PAOZZ		MS91 528-2N3B	96906	KNOB	EA	1
3	5	PAOZZ		CR38AU24-480 kHz	88407	CRYSTAL, QUARTZ CHANNEL 1 ONLY	EA	1
3	5	PAOZZ		CR38AU29-920 kHz	88407	CRYSTAL, QUARTZ CHANNEL 2 ONLY	EA	1
3	5	PAOZZ		CR38AU35-360 kHz	88407	CRYSTAL, QUARTZ CHANNEL 3 ONLY	EA	1
3	5	PAOZZ		CR38AU40-800 kHz	88407	CRYSTAL, QUARTZ CHANNEL 4 ONLY	EA	1
3	5	PAOZZ		CR38AU46-240 kHz	88407	CRYSTAL, QUARTZ CHANNEL 5 ONLY	EA	1
3	5	PAOZZ		CR38AU51-680 kHz	88407	CRYSTAL, QUARTZ CHANNEL 6 ONLY	EA	1
3	5	PAOZZ		CR38AU57-120 kHz	88407	CRYSTAL, QUARTZ CHANNEL 7 ONLY	EA	1
3	5	PAOZZ		CR38AU62-560 kHz	88407	CRYSTAL., QUARTZ CHANNEL 8 ONLY	EA	1
3	5	PAOZZ		CR38AU68-000 kHz	88407	CRYSTAL, QUARTZ CHANNEL 9 ONLY	EA	1

SECTION II. REPAIR PARTS LIST

(1) ILLUSTRATION		(2)	(3)	(4)	(5)	(6)	(7)	(8)
(a) FIG. NO.	(b) ITEM NO.	SMR CODE	FEDERAL STOCK NUMBER	PART NUMBER	FSCM	DESCRIPTION USABLE ON CODE	U/M	QTY INC IN UNIT
3	5	PAOZZ		CR38AU73-440 kHz	88407	CRYSTAL, QUARTZ CHANNEL 10 ONLY	EA	1
3	5	PAOZZ		CR38AU78-880 kHz	88407	CRYSTAL, QUARTZ CHANNEL 11 ONLY	EA	1
3	5	PAOZZ		CR38AU84-320 kHz	88407	CRYSTAL, QUARTZ CHANNEL 12 ONLY	EA	1
3	5	PAOZZ		CR38AU89-760 kHz	88407	CRYSTAL, QUARTZ CHANNEL 13 ONLY	EA	1
3	5	PAOZZ		CR38AU95-200 kHz	88407	CRYSTAL, QUARTZ CHANNEL 14 ONLY	EA	1
3	5	PAOZZ		CR38AU100-640 kHz	88407	CRYSTAL, QUARTZ CHANNEL 15 ONLY	EA	1
3	5	PAOZZ		CR42AU106-080 kHz	88407	CRYSTAL, QUARTZ CHANNEL 16 ONLY	EA	1
3	5	PAOZZ		CR42AU111-520 kHz	88407	CRYSTAL, QUARTZ CHANNEL 17 ONLY	EA	1
3	5	PAOZZ		CR42AU116-960 kHz	88407	CRYSTAL, QUARTZ CHANNEL 18 ONLY	EA	1
3	5	PAOZZ		CR42AU122-400 kHz	88407	CRYSTAL, QUARTZ CHANNEL 19 ONLY	EA	1
3	5	PAOZZ		CR42AU127-840 kHz	88407	CRYSTAL, QUARTZ CHANNEL 20 ONLY	EA	1
3	5	PAOZZ		CR42AU 133-280 kHz	88407	CRYSTAL, QUARTZ CHANNEL 21 ONLY	EA	1
3	5	PAOZZ		CR42AU138-720 kHz	88407	CRYSTAL, QUARTZ CHANNEL 22 ONLY	EA	1
3	5	PAOZZ		CR42AU144-160 kHz	88407	CRYSTAL, QUARTZ CHANNEL 23 ONLY	EA	1

SECTION II. REPAIR PARTS LIST

(1) ILLUSTRATION		(2)	(3)	(4)	(5)	(6)	(7)	(8)
(a) FIG. NO.	(b) ITEM NO.	SMR CODE	FEDERAL STOCK NUMBER	PART NUMBER	FSCM	DESCRIPTION USABLE ON CODE	U/M	QTY INC IN UNIT
3	5	PAOZZ		CR42AU149-600 kHz	88407	CRYSTAL, QUARTZ CHANNEL 24 ONLY	EA	1
3	5	PAOZZ		CR42AU155-040 kHz	88407	CRYSTAL, QUARTZ CHANNEL 25 ONLY	EA	1
3	5	PAOZZ		CR42AU160-480 kHz	88407	CRYSTAL, QUARTZ CHANNEL 26 ONLY	EA	1
3	5	PAOZZ		CR42AU165-920 kHz	88407	CRYSTAL, QUARTZ CHANNEL 27 ONLY	EA	1
3	5	PAOZZ		CR42AU171-360 kHz	88407	CRYSTAL, QUARTZ CHANNEL 28 ONLY	EA	1
3	5	PAOZZ		CR42AU176-800 kHz	88407	CRYSTAL, QUARTZ CHANNEL 29 ONLY	EA	1
3	5	PAOZZ		CR42AU182-240 kHz	88407	CRYSTAL, QUARTZ CHANNEL 30 ONLY	EA	1
3	5	PAOZZ		CR42AU187-680 kHz	88407	CRYSTAL, QUARTZ CHANNEL 31 ONLY	EA	1
3	5	PAOZZ		CR42AU193-120 kHz	88407	CRYSTAL, QUARTZ CHANNEL 32 ONLY	EA	1



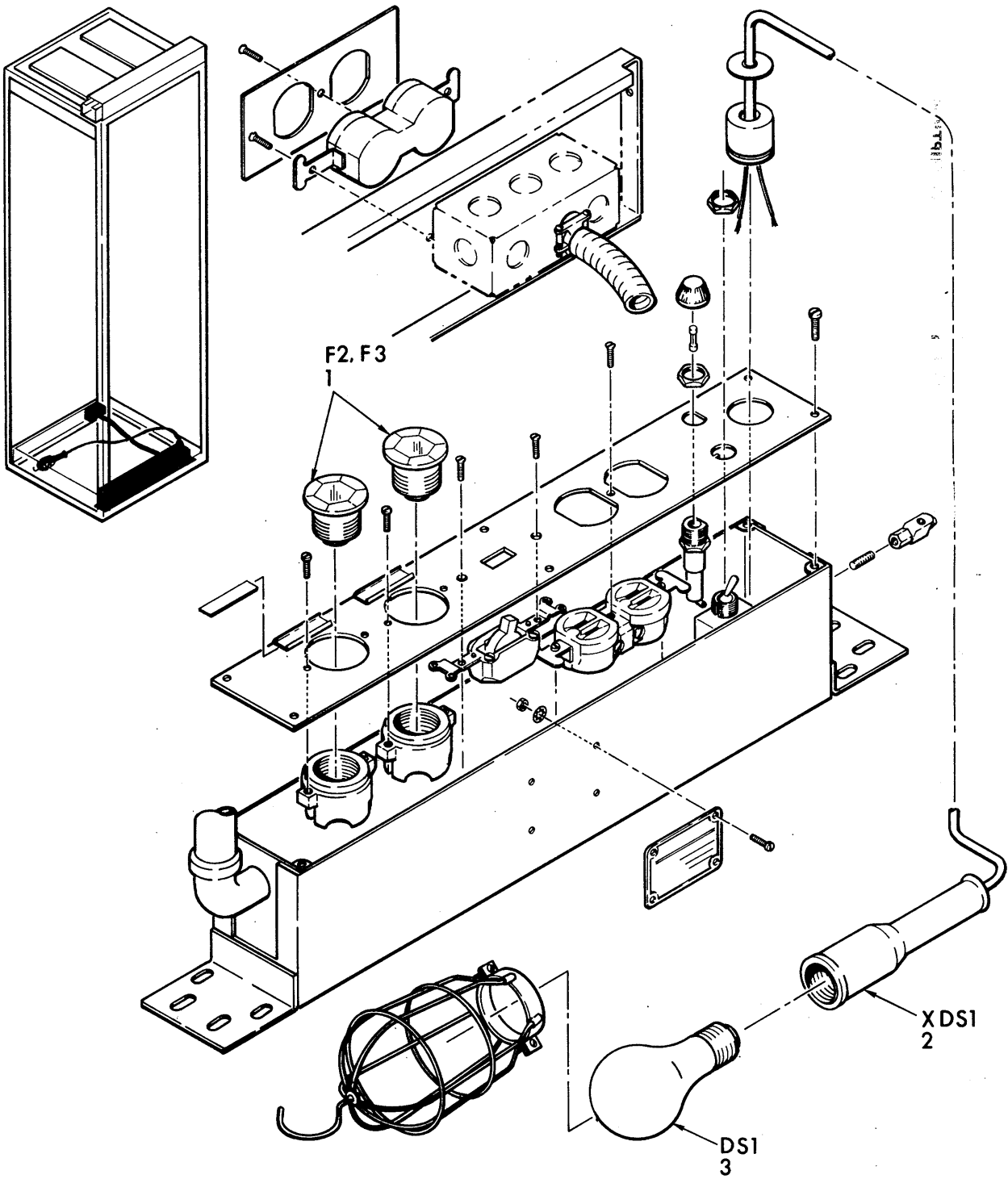
**PREFIX ALL REFERENCE  
DESIGNATIONS WITH A36**

ELIAU 004

Figure 4. Module extender Assembly, SMD454103

SECTION II. REPAIR PARTS LIST

(1) ILLUSTRATION		(2)	(3)	(4)	(5)	(6)	(7)	(8)
(a) FIG. NO.	(b) ITEM NO.	SMR CODE	FEDERAL STOCK NUMBER	PART NUMBER	FSCM	DESCRIPTION USABLE ON CODE	U/M	QTY INC IN UNIT
4	1	PAOZZ		7155-6-32	05791	GROUP: 06 MODULE EXTENDER ASSEMBLY  SCREW, CAPTIVE	EA	4



PREFIX ALL REFERENCE DESIGNATIONS WITH A1

ELIAU 005

Figure 5. Cabinet, Electrical Equipment, CY-597A/G



SECTION II. REPAIR PARTS LIST

(1) ILLUSTRATION		(2)	(3)	(4)	(5)	(6)	(7)	(8)
(a) FIG. NO.	(b) ITEM NO.	SMR CODE	FEDERAL STOCK NUMBER	PART NUMBER	FSCM	DESCRIPTION USABLE ON CODE	U/M	QTY INC IN UNIT
						<b>GROUP: 07 CABINET, ELECTRICAL EQUIPMENT CY-597 A/G</b>		
5	1	PAOZZ		15 AMP TIME	80063	FUSE, PLUG	EA	2
5	2	PAOZZ		120	39317	LAMP, PORTABLE, INSULATED	EA	1
5	3	PAOZZ		GE40A	24446	LAMP, INCANDESCENT	EA	1

SECTION IV

FEDERAL STOCK NUMBER AND PART NUMBER INDEX

<u>STOCK NUMBER</u>	<u>FIG. No.</u>	<u>ITEM No.</u>	<u>STOCK NUMBER</u>	<u>FIG. No.</u>	<u>ITEM No.</u>
5355-083-0829	2	1	5915-179-2849	3	1
	4	4	5915-239-3199	3	1
5915-013-7011	3	1	5915-239-3200	3	1
5915-069-2708	4	2	5915-239-3201	3	1
5915-069-2711	4	2	5915-239-3202	3	1
5915-069-2712	4	2	5915-239-3206	3	1
5915-069-2724	4	2	5915-239-3207	3	1
5915-069-2725	4	2	5915-240-2819	4	2
5915-069-2726	4	2	5915-240-2822	3	1
5915-069-2727	4	2	5915-483-5671	2	1
5915-069-2729	4	2	5915-483-5669	3	1
5915-069-3663	4	2	5915-930-4183	4	2
5915-069-3664	4	2	5915-930-4184	4	2
5915-069-5014	4	2	5915-930-4185	4	2
5915-069-5913	4	2	5920-280-8342	3	1
5915-177-2639	3	1	5920-296-0451	4	1

## SECTION IV. FEDERAL STOCK NUMBER AND PART NUMBER INDEX - CONTINUED

<u>Reference No.</u>	<u>Mfg Code</u>	<u>Fig No.</u>	<u>Item No.</u>	<u>Reference No.</u>	<u>Mfg Code</u>	<u>Fig No.</u>	<u>Item No.</u>
CR38AU24-480 kHz	88407	16	71	F02A250V1-4A	81349	2	2
CR38AU29-920 kHz	88407	16	71	FOA250V1-8A	81349	4	1
CR38AU35-360 kHz	88407	16	71	F02A250V1A	81349	3	2
CR38AU40-800 kHz	88407	16	71	GE40A	24446	6	3
CR38AU46-240 kHz	88407	16	71	MS91528-2N3B	96906	2	1
CR38AU51-680 kHz	88407	16	71			4	4
CR38AU57-120 kHz	88407	16	71	MS91528-2N4B	96906	2	3
CR38AU62-560 kHz	88407	16	71	NE51	81349	2	4
CR38AU68-000 kHz	88407	16	71	SMC563335-1	80063	16	42
CR38AU73-440 kHz	88407	16	71	THRU			
CR38AU78-880 kHz	88407	16	71	SMC563335-16			
CR38AU84-320 kHz	88407	16	71	120	39317	6	2
CR38AU89-760 kHz	88407	16	71	15 AMP TIME	71400	6	1
CR38AU95-200 kHz	88407	16	71	7155-6-32	05791	3	3
CR38AU100-640 kHz	88407	16	71			4	3
CR42AU106-080 kHz	88407	16	71			5	1
CR42AU111-520 kHz	88407	16	71	9-1651-01	88183	3	1
CR42AU116-960 kHz	88407	16	71	9-1651-02	88183	3	1
CR42AU122-400 kHz	88407	16	71	9-1651-03	88183	3	1
CR42AU127-840 kHz	88407	16	71	9-1651-04	88183	3	1
CR42AU133-280 kHz	88407	16	71	9-1651-05	88183	3	1
CR42AU138-720 kHz	88407	16	71	9-1651-06	88183	3	1
CR42AU144-160 kHz	88407	16	71	9-1651-07	88183	3	1
CR42AU149-600 kHz	88407	16	71	9-1651-08	88183	3	1
CR42AU155-040 kHz	88407	16	71	9-1651-09	88183	3	1
CR42AU160-480 kHz	88407	16	71	9-1651-10	88183	3	1
CR42AU165-920 kHz	88407	16	71	9-1651-11	88183	3	1
CR42AU171-360 kHz	88407	16	71	9-1651-12	88183	3	1
CR42AU176-800 kHz	88407	16	71	9-1651-13	88183	3	1
CR42AU182-240 kHz	88407	16	71	9-1651-14	88183	3	1
CR42AU187-680 kHz	88407	16	71	9-1651-15	88183	3	1
CR42AU193-120 kHz	88407	16	71	9-1651-16	88183	3	1

By Order of the Secretary of the Army:

**BERNARD W. ROGERS**  
*General, United States Army*  
*Chief of Staff*

Official:

**PAUL T. SMITH**  
*Major General, United States Army*  
*The Adjutant General*

**DISTRIBUTION:**

*Active Army:*

USASA (2)  
COE (1)  
TSG (1)  
USAARENBD (1)  
DARCOM (1)  
TRADOC (2)  
OS Maj Comd (4)  
LOGCOMDS (3)  
MICOM (2)  
TECOM (2)  
USACC (4)  
MDW (1)  
Armies (2)  
Corps (2)  
HISA (Ft Monmouth) (33)  
Svc Colleges (1)  
USASESS (5)  
USAADS (2)  
USAFAS (2)  
LSAARMS (2)  
USAIS (2)  
USAES (2)  
USAICS (3)  
MAAG (1)

USARMIS (1)  
Installations (2) except  
Fort Carson (5)  
Fort Gillem (10)  
Fort Gordon (10)  
Fort Huachuca (10)  
Ft Richardson (ECOM Ofc) (2)  
LBAD (14)  
SAAD (30)  
TOAD (14)  
SHAD (3)  
Sig FLDMS (1)  
USAERDAA (1)  
USAERDAW (1)  
Units org under fol TOE: (1)  
11-16  
11-85  
11-97  
11-117  
11-302  
11-500(AA-AC)  
29-134  
29-136

NG: None

USAR: None

For explanation of abbreviations used see, AR 310-50

RECOMMENDED CHANGES TO EQUIPMENT TECHNICAL PUBLICATIONS



THEN...JOT DOWN THE  
DOPE ABOUT IT ON THIS FORM.  
CAREFULLY TEAR IT OUT, FOLD IT  
AND DROP IT IN THE MAIL.

**SOMETHING WRONG WITH PUBLICATION**

FROM: (PRINT YOUR UNIT'S COMPLETE ADDRESS)

DATE SENT

PUBLICATION NUMBER

PUBLICATION DATE

PUBLICATION TITLE

BE EXACT PIN-POINT WHERE IT IS

PAGE NO.	PARA-GRAPH	FIGURE NO.	TABLE NO.
----------	------------	------------	-----------

IN THIS SPACE, TELL WHAT IS WRONG  
AND WHAT SHOULD BE DONE ABOUT IT.

TEAR ALONG PERFORATED LINE

PRINTED NAME, GRADE OR TITLE AND TELEPHONE NUMBER

SIGN HERE

**PIN: 029028**